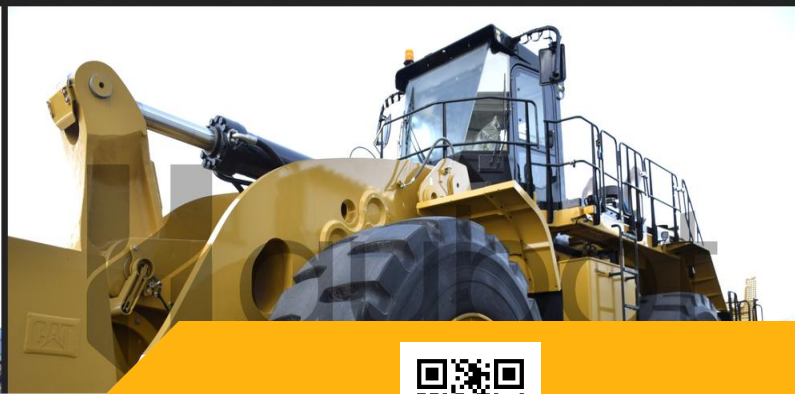
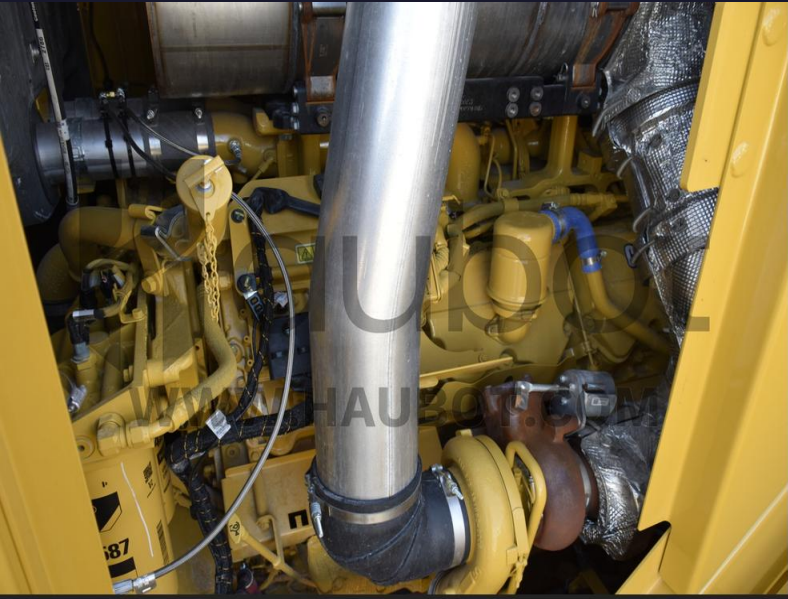


INSPECTION REPORT



Lot Number: LX4848JD
Ruben Meijer, Senior Inspector
May 05, 2024

Cabin

Inspection Point	Condition	Comment
1. Seat	Excellent	
2. Switches	Excellent	
3. Dashboard	Excellent	
4. A/C & Heating System	Excellent	
5. Cabin Doors	Excellent	
6. Windows	Excellent	
7. Wipers	Excellent	
8. Flooring	Excellent	
9. Other		

Engine

Inspection Point	Condition	Comment
1. Alternator	Excellent	
2. Leakages	Excellent	
3. Oil condition	Excellent	
4. Exhaust	Excellent	
5. Fluids level	Excellent	
6. Cooling system	Excellent	
7. Belts	Excellent	
8. Noise	Excellent	
9. Other		



Exterior

Inspection Point	Condition	Comment
1. Chassis	Excellent	
2. Paintwork	Excellent	
3. Lights	Excellent	
4. Steps & Rails	Excellent	
5. Corrosion	Excellent	
6. Cleanliness	Excellent	
7. Damages	Excellent	
8. Other		

Powertrain

Inspection Point	Condition	Comment
1. Axles	Excellent	
2. Joints	Excellent	
3. Oil condition	Excellent	
4. Brakes	Excellent	
5. Gearbox	Excellent	
6. Differentials	Excellent	
7. Suspension	Excellent	
8. Other		



Hydraulics

Inspection Point	Condition	Comment
1. Hoses & Lines	Excellent	
2. Steering	Excellent	
3. Pumps	Excellent	
4. Cylinders	Excellent	
5. Corrosion	Excellent	
6. Fluid levels	Excellent	
7. Other		

Testing

Inspection Point	Condition	Comment
1. Transmission test	Excellent	
2. Engine test	Excellent	
3. Steering test	Excellent	
4. Electrics test	Excellent	
5. Braking test	Excellent	
6. Power test	Excellent	
7. Suspension test	Excellent	
8. Other		



Wheels

Inspection Point	Condition	Comment
1. Rims	Excellent	
2. Front tires	Excellent	
3. Rear tires	Excellent	
4. Other		

Conclusion

Inspection's comment

I have completed a thorough inspection of the Caterpillar 992 wheel loader and am pleased to report that it is in outstanding, nearly new condition.

Operational Hours: With only 12 hours of use, this wheel loader is as close to new as possible, exhibiting minimal wear and tear. **Mechanical and Structural Integrity:** All critical mechanical systems, including the engine and hydraulics, are in optimal condition. The loader's structure, including its frame, bucket, and arms, shows no signs of wear, aligning with its low operational hours.

Exterior and Cabin: The exterior is in excellent shape, with no visible defects. The cabin is pristine, with all controls functioning as expected for a new machine.

Maintenance: The limited use is reflected in the maintenance records, showing adherence to initial service requirements with no outstanding issues.

Overall Assessment: The Caterpillar 992 is in exceptional condition, akin to a brand-new machine, making it an excellent acquisition for buyers seeking top-quality equipment with virtually no usage.

This loader is ready for immediate sale and use, requiring no additional maintenance or service.

